

# SGMA

**New Agencies, New Direction,  
New Responsibilities**

# HOW BIG IS THE PROBLEM?

- Interconnected basins
- 2-2.5 million acre-feet of groundwater overdraft per year
- Related impacts
- Up to 500,000 – 700,000 acres could be fallowed
- Estimated crop value loss in the billions each year



# THE PERFECT STORM

- Severe drought, renewed subsidence, wells going dry, water reallocations, all came to a head in 2014
- San Joaquin Valley became the poster child of what has gone wrong



# THE FALLOUT WAS ...

## Passage of Sustainable Groundwater Management Act (SGMA) in 2014



Will affect both agricultural and urban/municipal wells



# MANDATED FIX

CASGEM Groundwater Basin Prioritization — South Central Region



- State passes Sustainable Groundwater Management Act of 2014 (SGMA)
- Basins have  $\approx 25$  years to achieve “sustainability”
- New agencies to be created; plans to be put in place
- Local control preserved, if we exercise it
- Overdraft is the primary problem
- Related impacts

# **A GRAND EXPERIMENT**

## **GROUNDWATER SUSTAINABILITY AGENCIES**

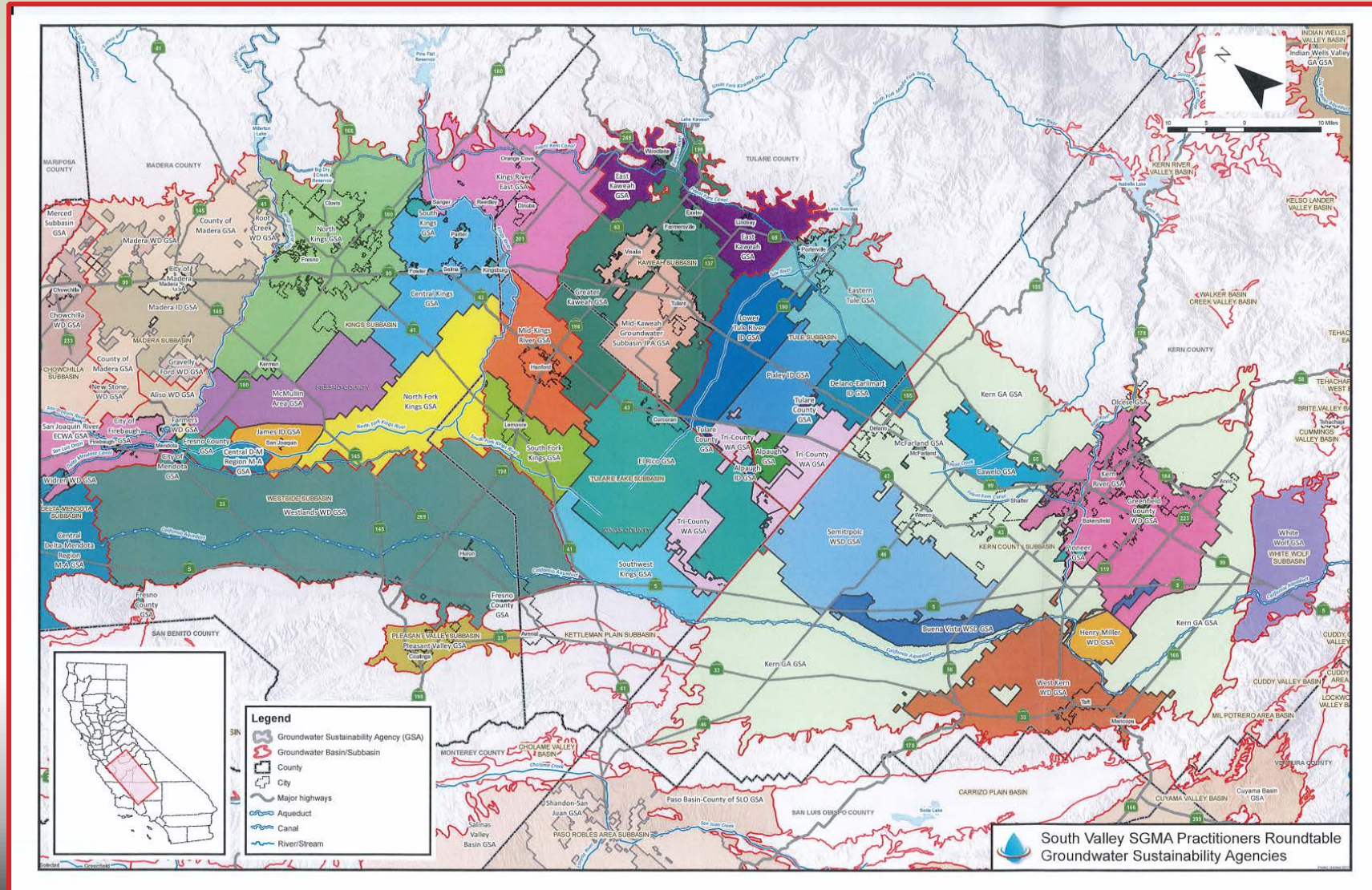
**“The simultaneous creation of hundreds of new public agencies with significant, long-term management responsibilities has little precedent in California or elsewhere in the United States.”**

- from “To Consolidate or Coordinate?”

Stanford Law School, Gould Center for  
Conflict Resolution 2016



# GSAS IN SAN JOAQUIN VALLEY

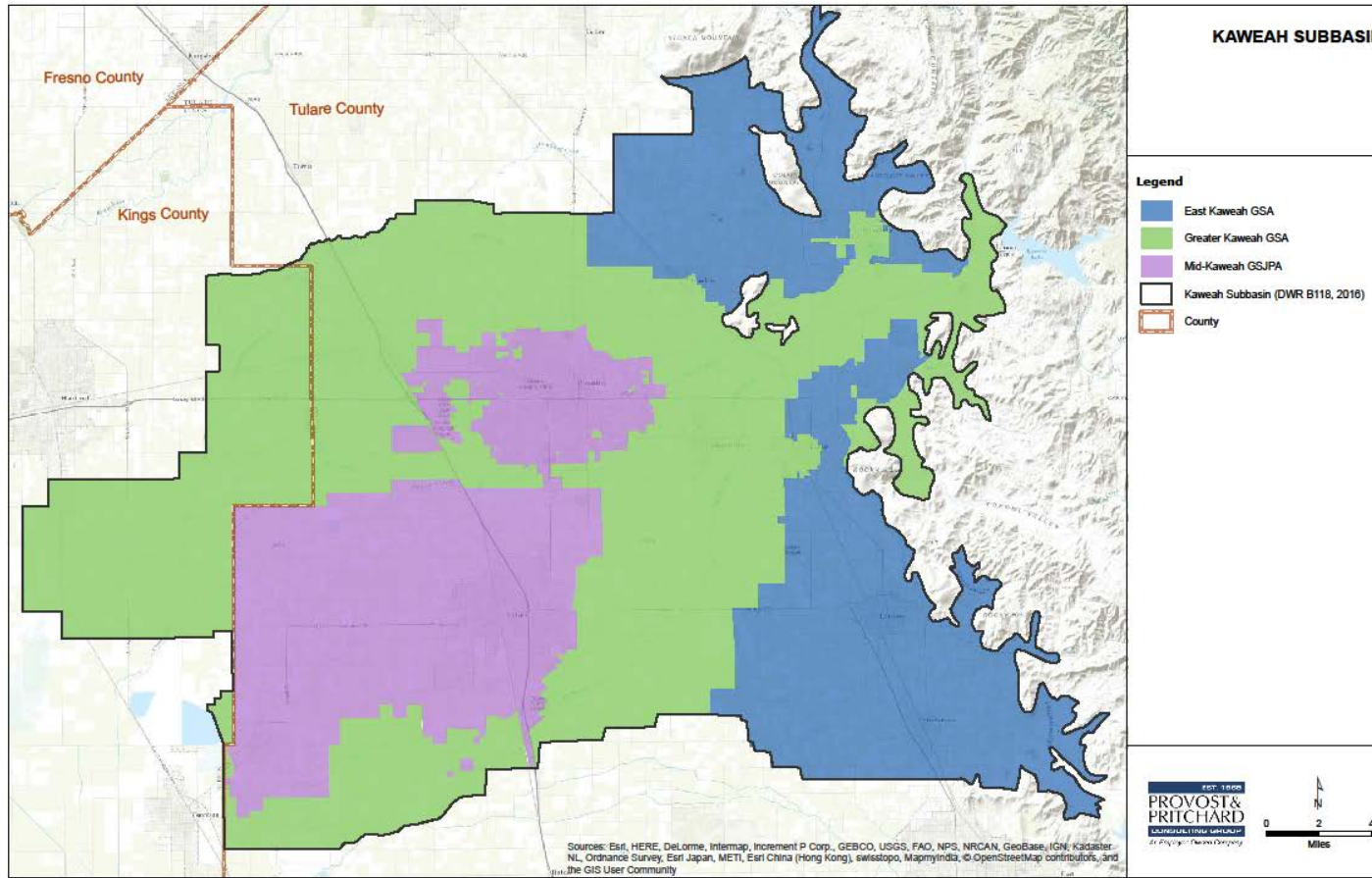


About 300 state-wide

120 in San Joaquin Valley



# GSAS IN KAWEAH REGION



East Kaweah GSA – 120,000 acres

Greater Kaweah GSA – 219,000 acres

Mid-Kaweah GSA – 108,000 acres



# WHAT WILL OR COULD GSAS DO?



- Require measurement of groundwater pumping
- Regulate/limit groundwater pumping
- Voluntary land retirement
- Possible allocation flexibility
- Charge fees for costs incurred
- Find/capture more water

Local implementation first; state intervention if necessary

# KEY COMPLIANCE DATES

**June 2017 – Notify State DWR of Agency Formation**

**Jan 2020 – Critically-overdrafted basins must be operating under new sustainability plans**

- **NO PLAN? STATE STEPS IN**
- **NO PROGRESS ALONG THE WAY? STATE STEPS IN**

**By Jan 2040 – Sustainability to be achieved**

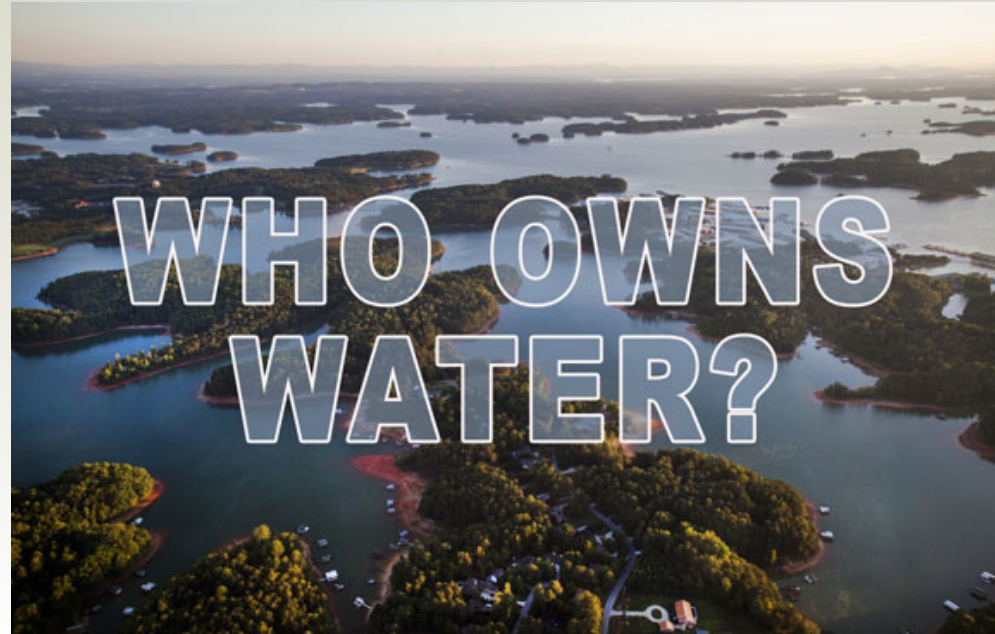
- **DIDN'T GET THERE? STATE STEPS IN**

**Two potential 5-yr extensions beyond 20 yrs “for good cause”**

**Total 50-year planning horizon to maintain sustainability**

# **SORTING OUT GROUNDWATER OWNERSHIP**

- **Groundwater rights not clear**
  - Landowners
  - Municipalities
- **Role of surface water rights**
- **Many GSAs – many water budgets**
- **SGMA v. basin adjudications**





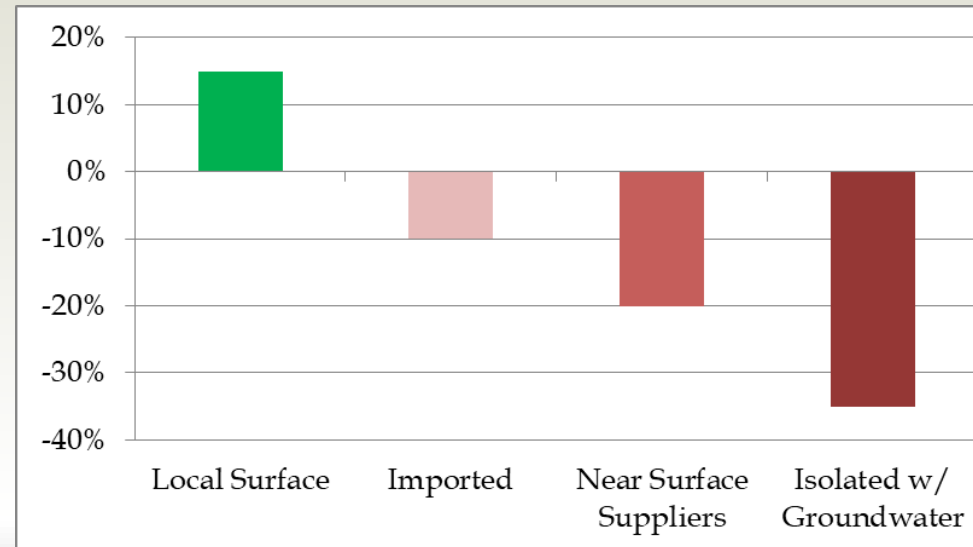
# INTERIM LAND VALUE REALITIES

## Financial markets reacting

### Groupings:

- Lands w/ local Sierra stream supplies
- Lands with imported supplies
- Lands in or near surface suppliers
- Isolated lands with deep groundwater only

Land Value Changes – South San Joaquin Valley



Will GSP projects mitigate for sagging land values?

# **MID-KAWEAH GSA STRANGE BEDFELLOWS?**



**Cities will grow over 50-yr planning horizon**

**TID flows water through both cities**

**At times, TID has surplus water**

**Ag/urban leadership role**

**Supply projects cost money – recharge that benefits  
TID benefits both cities**

**History of Collaboration - partnerships already  
established**

# GOVERNANCE



## Mid-Kaweah Groundwater Sustainability Agency

### Board Members

Howard Stroman (Tulare)	Dave Martin (TID)
Jose Sigala (Tulare)	Greg Collins (Visalia)
David Bixler (TID)	Steve Nelson (Visalia)

### Management Committee

### Tech. Advisory Sub-Committee

### Advisory Committee



# **ADVISORY COMMITTEE MEMBERS**

**B. WILBUR – CHAIR    J. NICHOLS – VICE CHAIR**

Mark Boyes – At-large, Tulare (ag.-related business)

Lee Johnson – At-large, Visalia

Eric Furtado – At-large, Visalia (Calif. Water Service Co.)

Richard Garcia – Environmental, Visalia (Sierra Club)

Mike Lane – At-large, Tulare (Building Industry Assn.)

Irene Lemons – At-large, Okieville (Okieville-Highland Acres MWC)

Sopac Mulholland – Environmental, Visalia (Sequoia Riverlands Trust)

Jim Nichols – Agriculture, Tulare (Nichols Farms)

Jessi Snyder – DAC, Visalia (Self-Help Enterprises)

Blake Wilbur – Agriculture, Tulare (SBS Ag.)

Edward Henry – At large, Tulare (retired, CA Dept. of Food & Ag.)

# LOOKING AHEAD



**Coordination Agreement with others – cost \$850K; equal sharing by three GSAs**

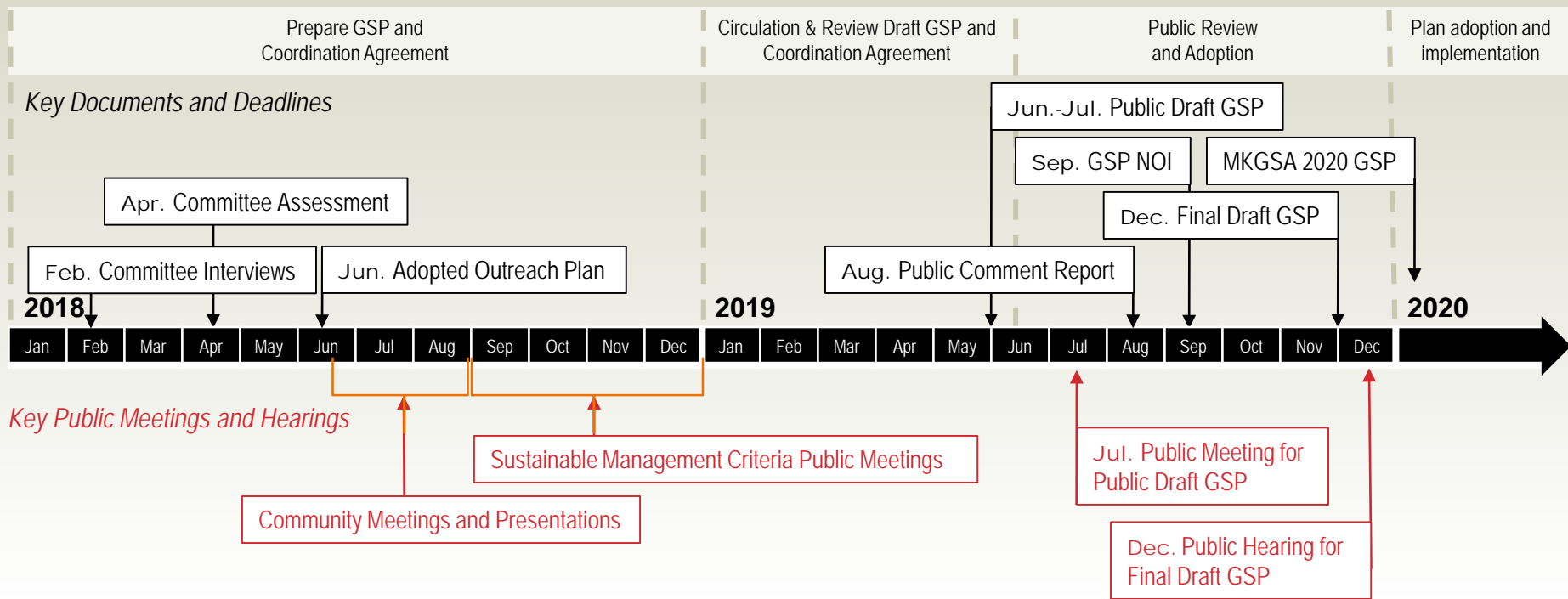
**Plan Development – cost \$600K; equal contributions by cities, TID**

**What's in a Plan? Pumping measurements, project formulation, pumping allocations**

**Plan Implementation in 2020 – cost ? sharing?**

**Objectives – minimize impacts on ag productivity; satisfy growth projections of city General Plans**

# IMPLEMENTATION AND ADAPTATION





# GET INVOLVED!

- Find your GSA at [SGMA.water.ca.gov](http://SGMA.water.ca.gov)
- Find us at [www.MKGSA.org](http://www.MKGSA.org)
- Stakeholder Venues
  - GSA advisory committees
  - GSA board meetings
  - Other public meetings
  - GSA meeting notes at [waterwrights.net](http://waterwrights.net)